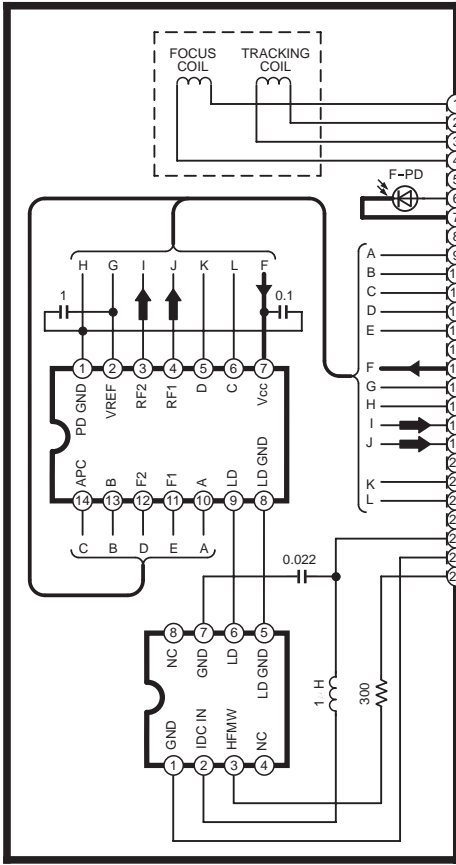


SCHEMATIC DIAGRAM-1

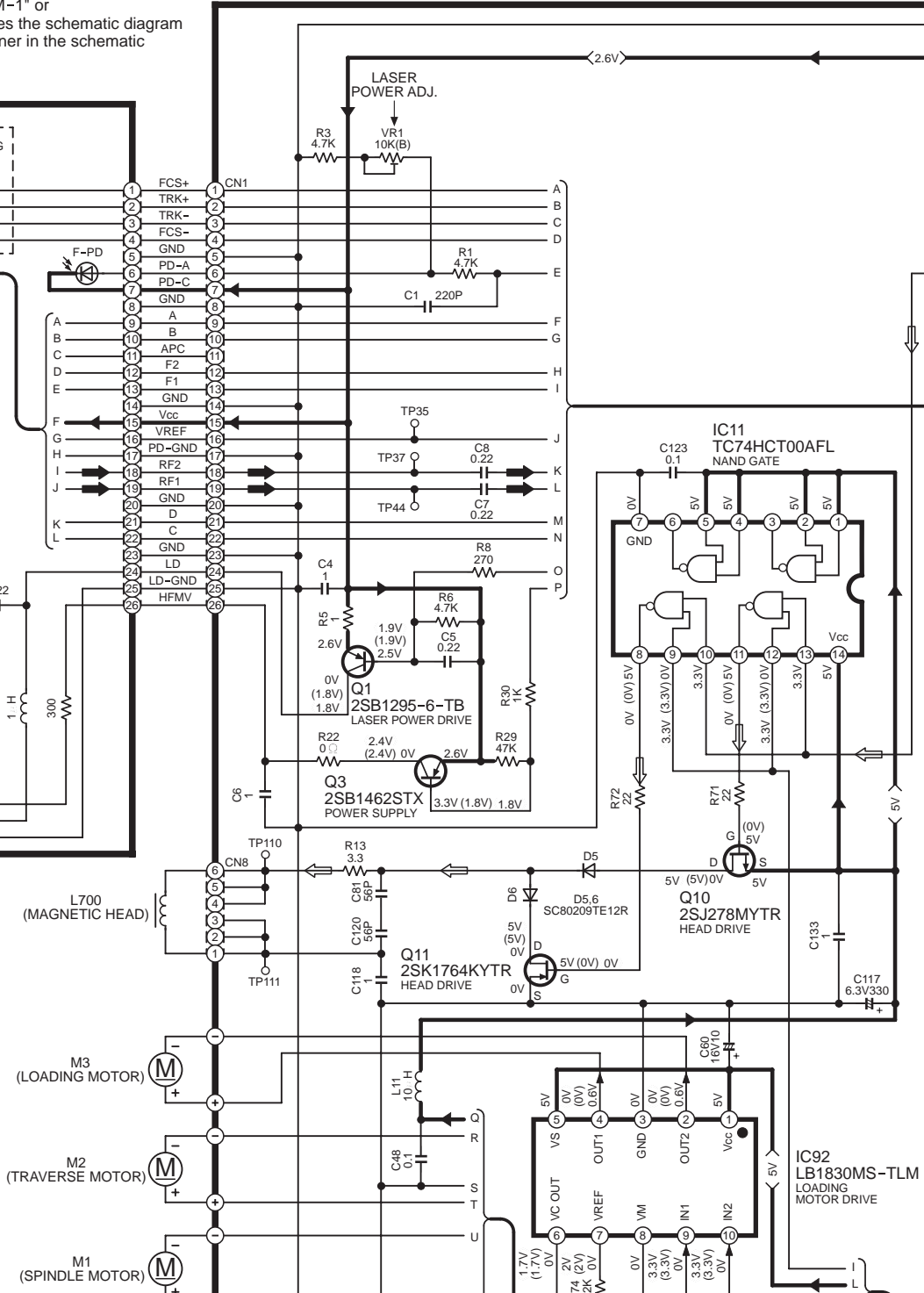
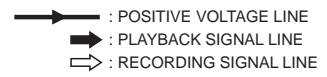
Note:

The number which noted at the connectors on the schematic diagram as "SCHEMATIC DIAGRAM-1" or "SCHEMATIC DIAGRAM-2" indicates the schematic diagram serial number located on the left corner in the schematic diagram.

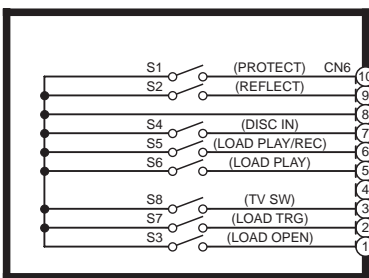
A MD OPTICAL PICKUP



A MD SERVO CIRCUIT

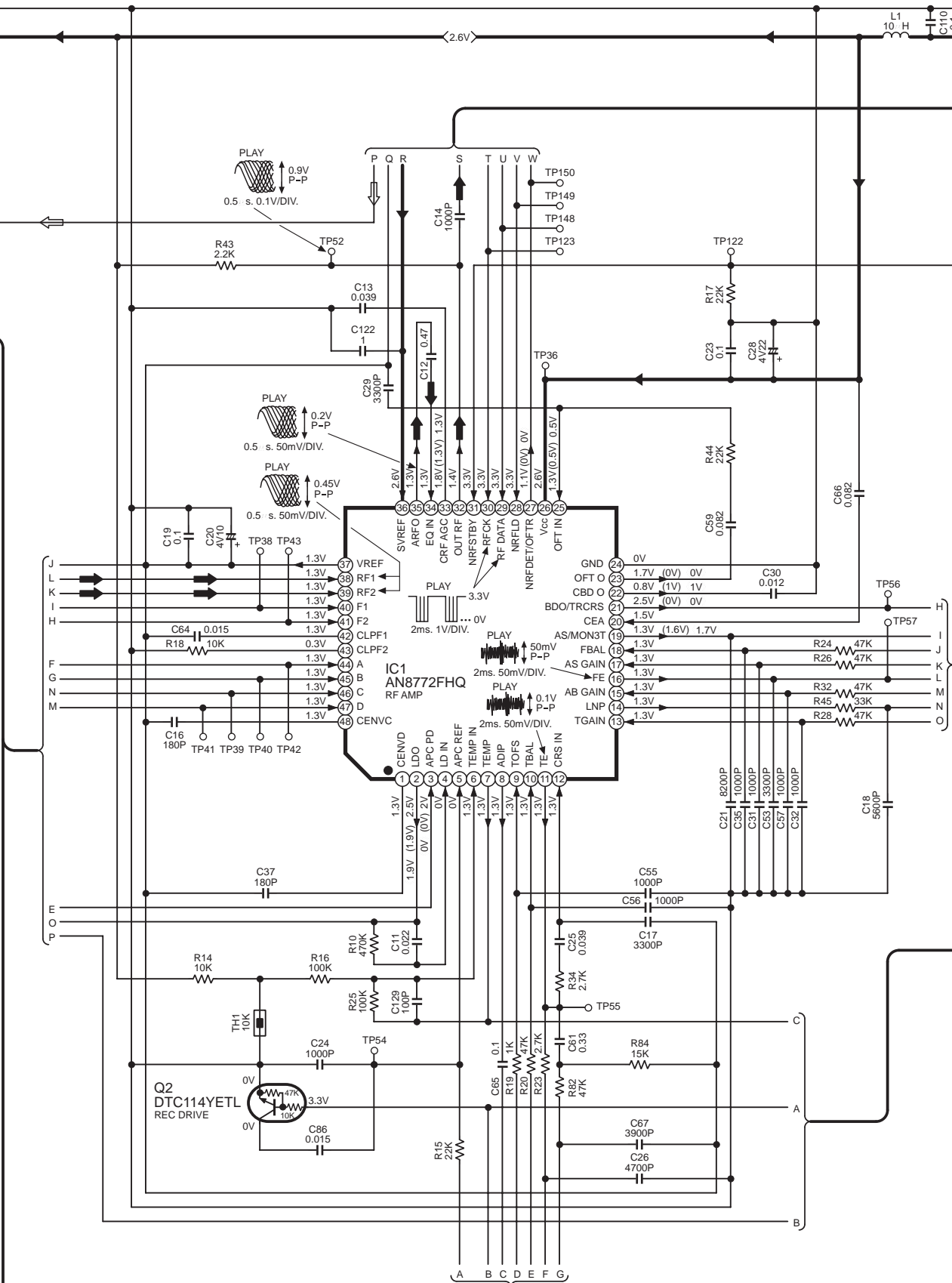


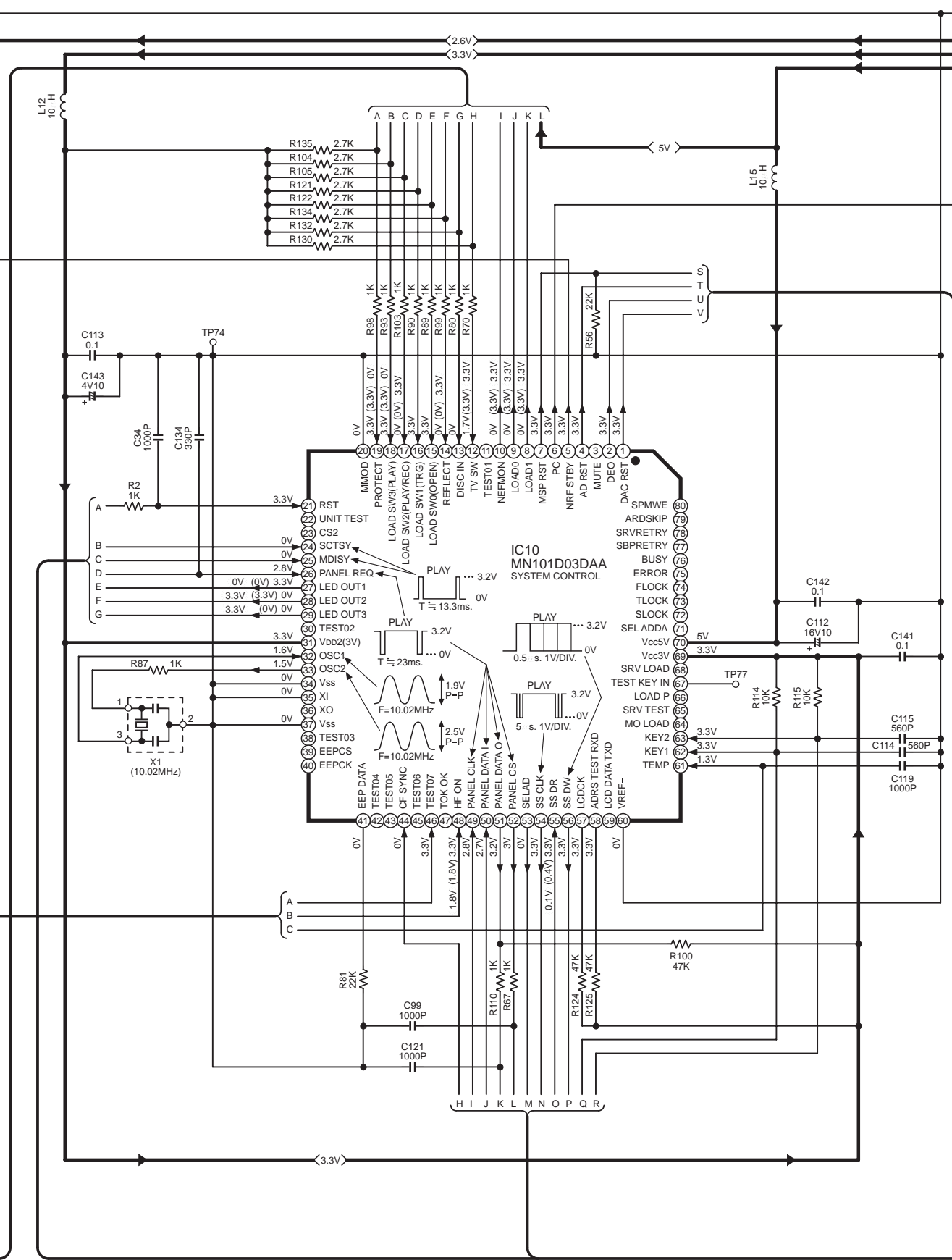
B SWITCH CIRCUIT



SCHEMATIC DIAGRAM-2

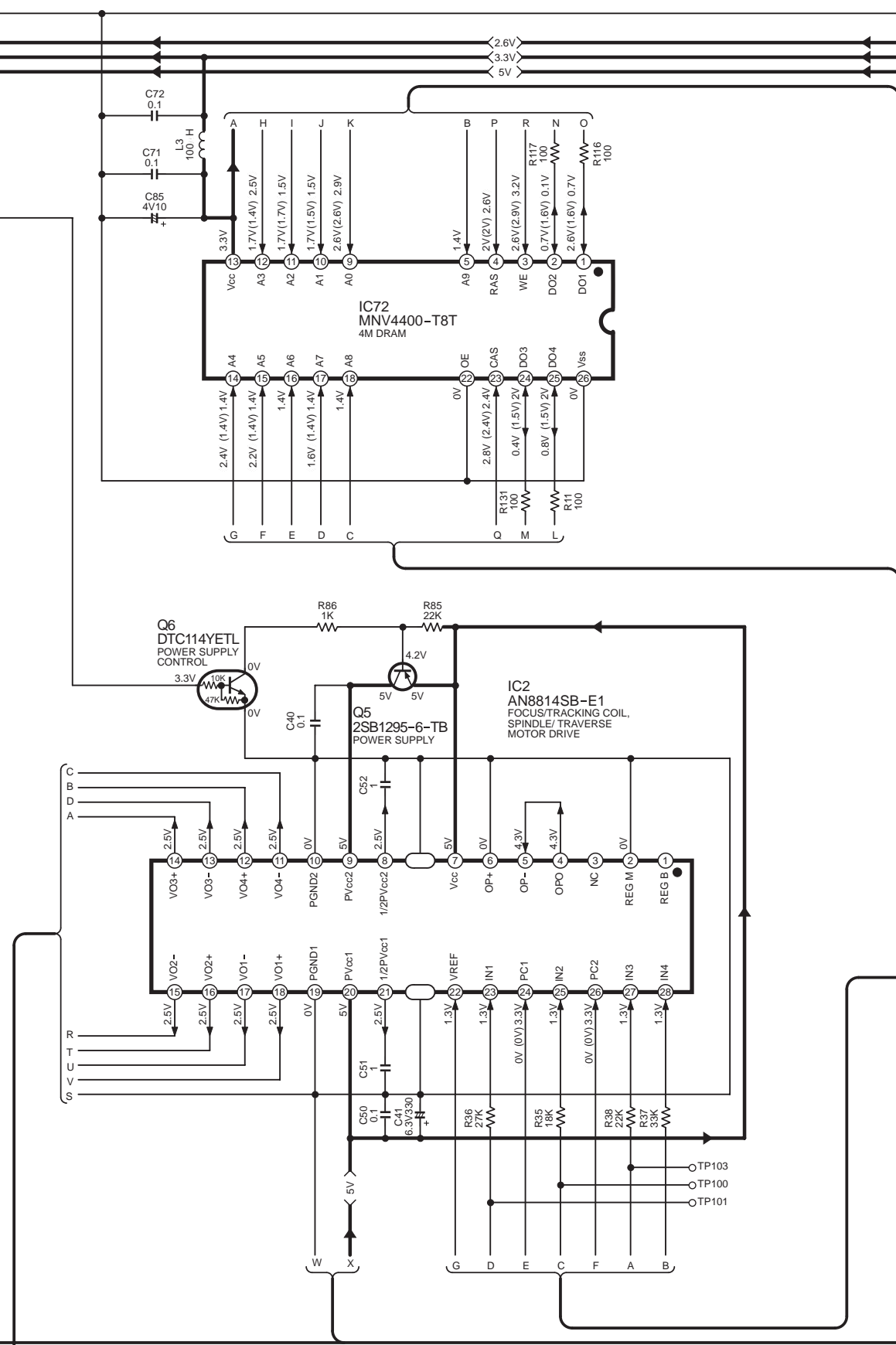
→ : POSITIVE VOLTAGE LINE ↠ : PLAYBACK SIGNAL LINE ⇨ : RECORDING SIGNAL LINE





SCHEMATIC DIAGRAM-4

→ : POSITIVE VOLTAGE LINE



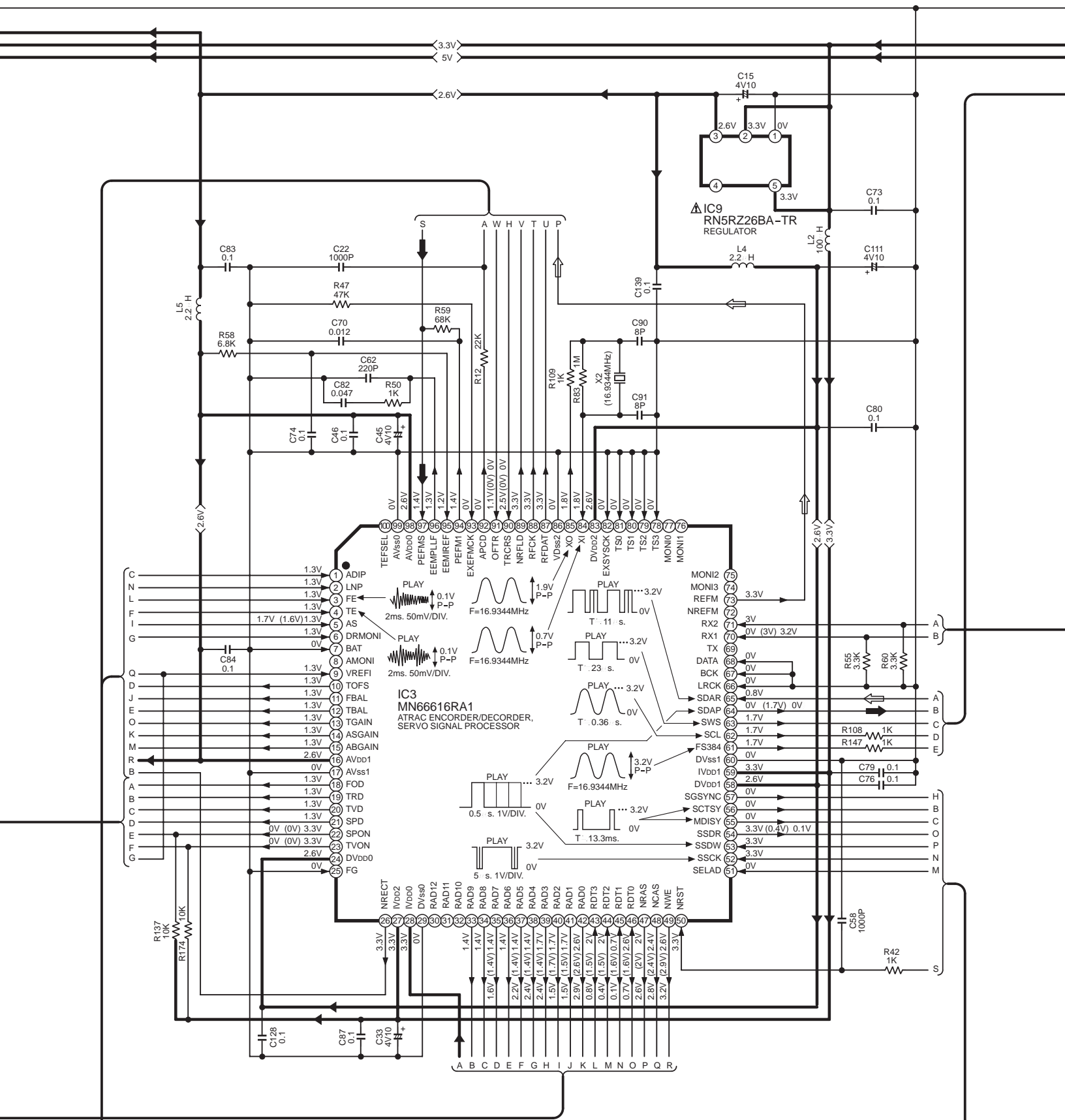
SCHEMATIC DIAGRAM-5

A MD SERVO CIRCUIT

➔ : POSITIVE VOLTAGE LINE

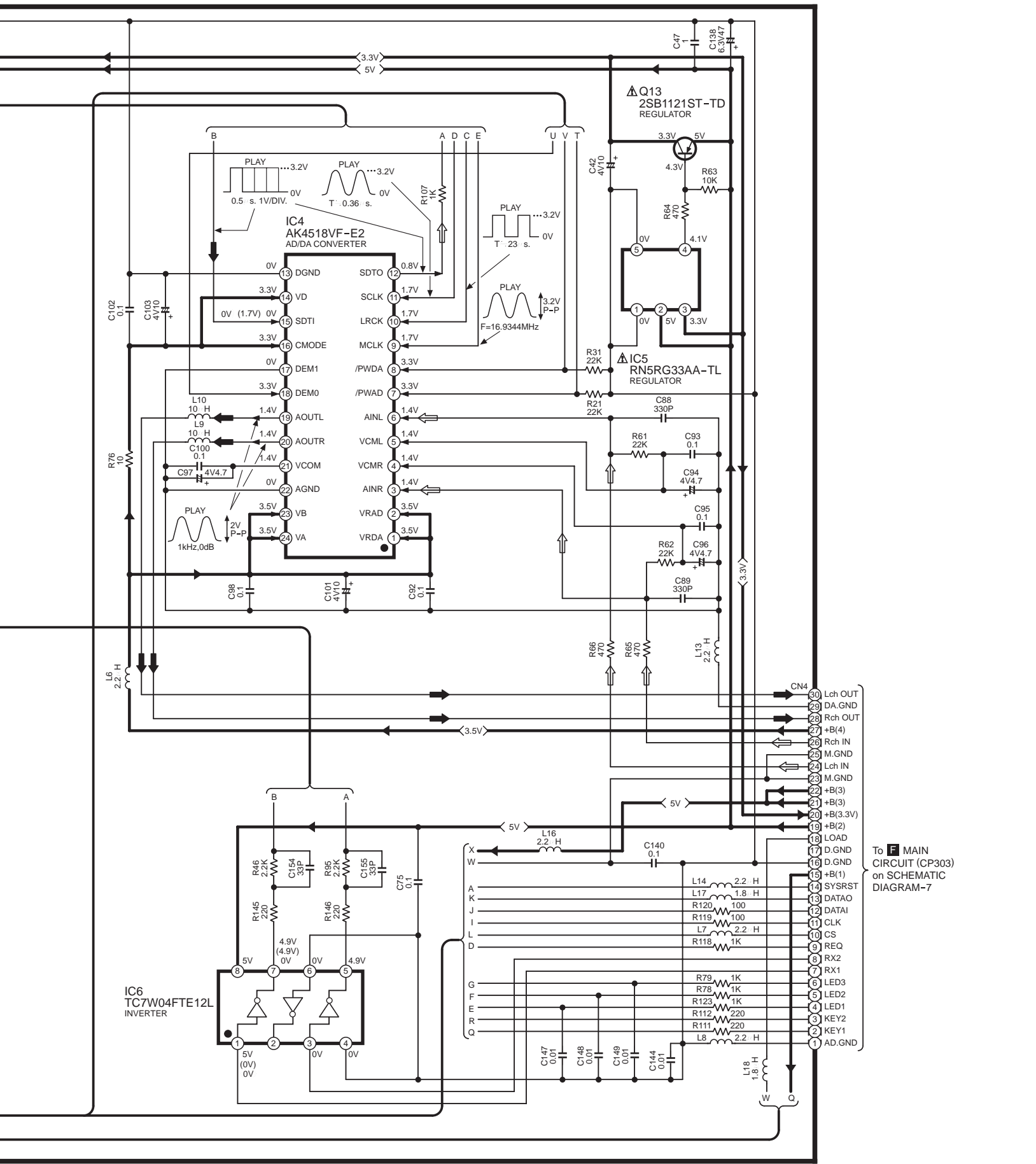
➡ : PLAYBACK SIGNAL LINE

⇨ : RECORDING SIGNAL LINE



SCHEMATIC DIAGRAM-6

: POSITIVE VOLTAGE LINE
 : PLAYBACK SIGNAL LINE
 : RECORDING SIGNAL LINE

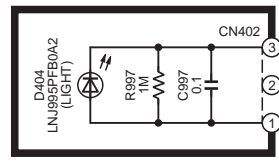


To **MAIN**
 CIRCUIT (CP303)
 on SCHEMATIC
 DIAGRAM-7

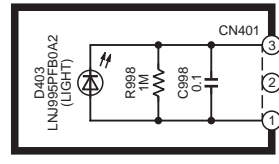
E OPERATION CIRCUIT

→ : POSITIVE VOLTAGE LINE
 ⇨ : PLAYBACK SIGNAL LINE
 ⇩ : RECORDING SIGNAL LINE

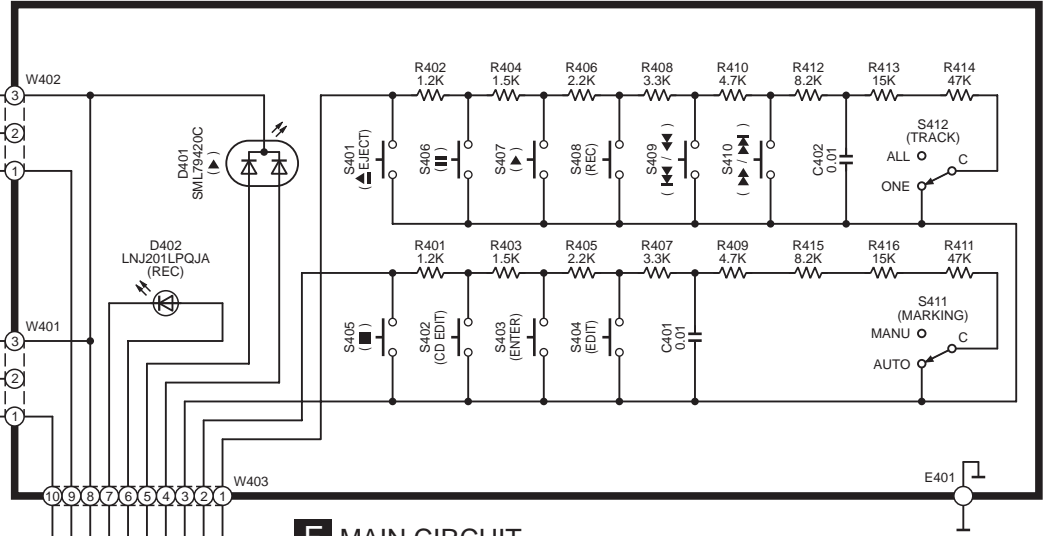
C LED(L) CIRCUIT



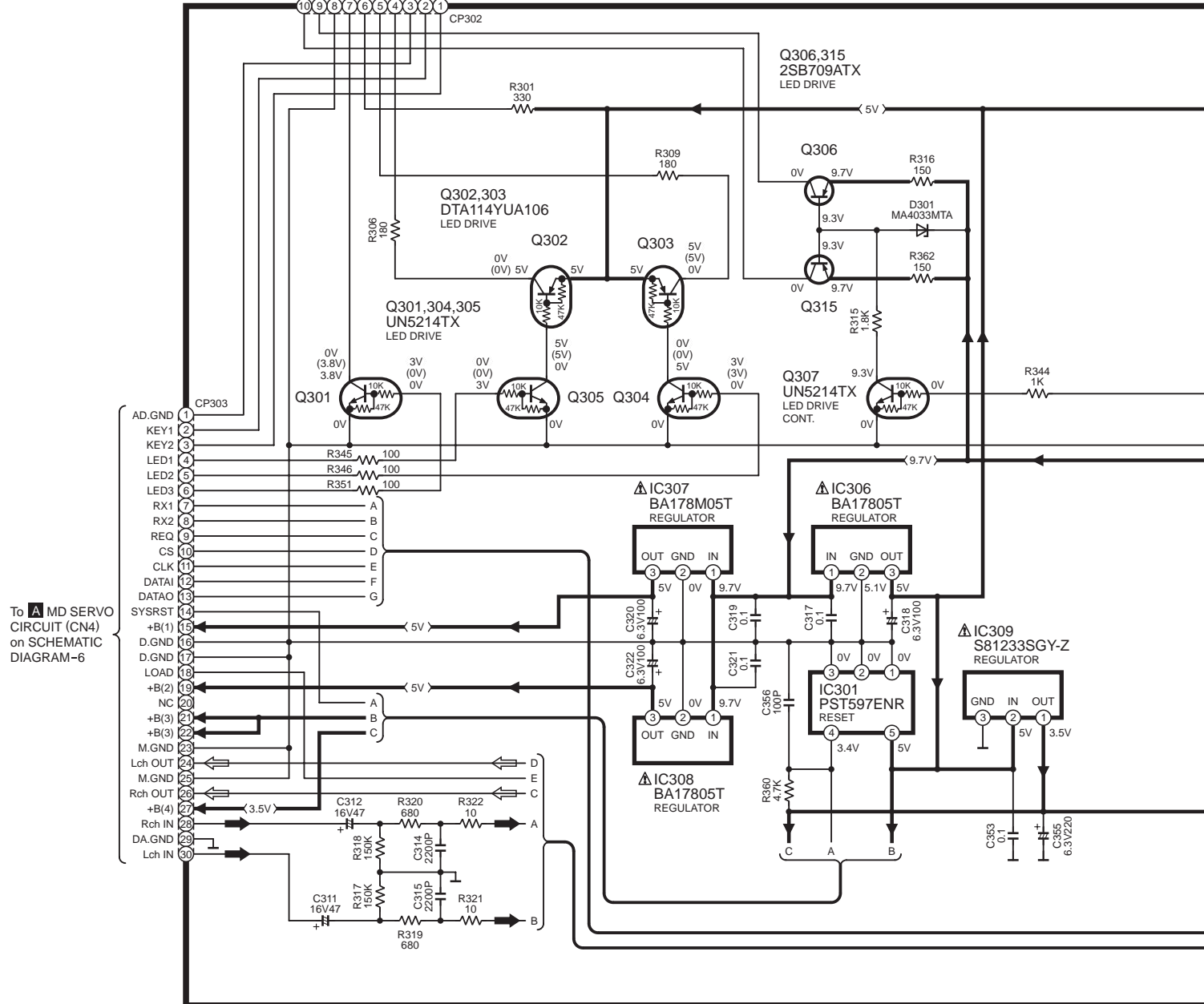
D LED(R) CIRCUIT



KEEPING TO THE RULE OF UNIT SUPPLY, WE DO NOT SUPPLY SINGLE PARTS.



F MAIN CIRCUIT



SCHEMATIC DIAGRAM-8

: POSITIVE VOLTAGE LINE
 : PLAYBACK SIGNAL LINE
 : RECORDING SIGNAL LINE

